



## FIGURES

1 THROUGH 5

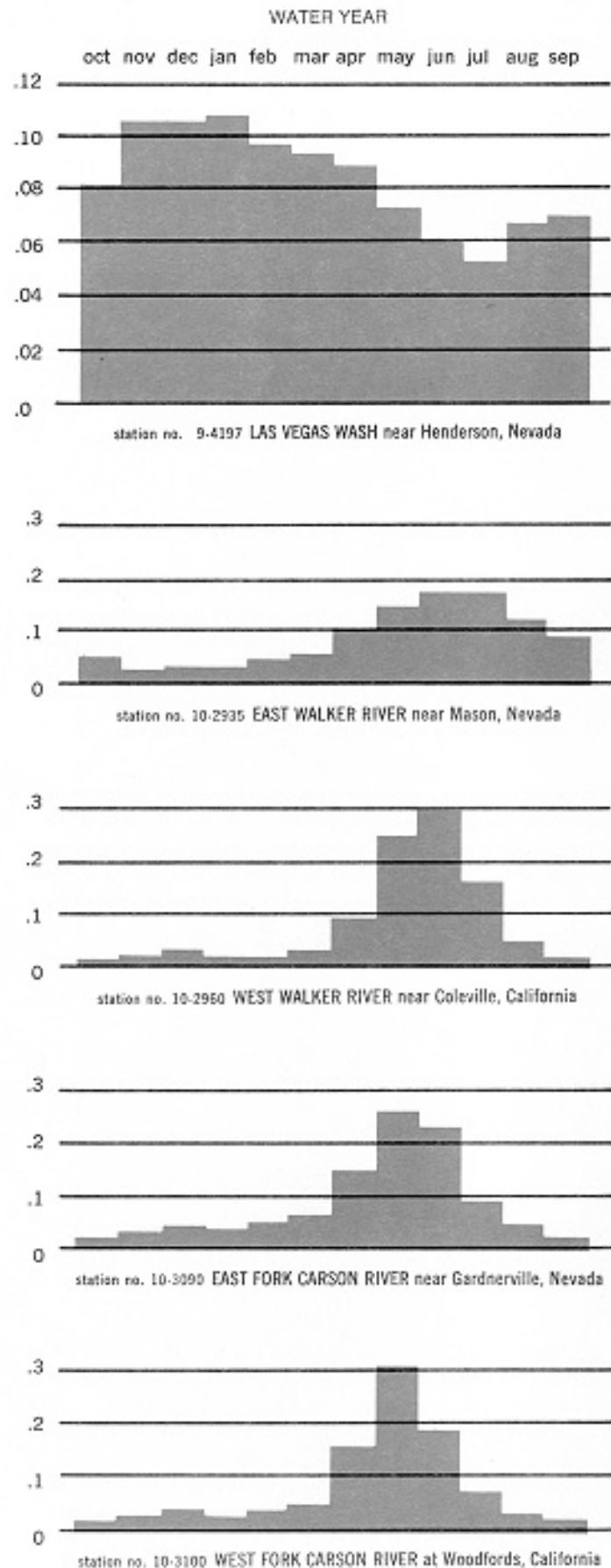


Jim Reimheller

Figure 1 GRAPHS SHOWING AVERAGE SEASONAL PATTERN OF STREAMFLOW

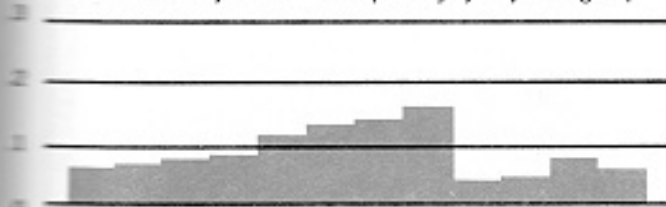


Cliff Segersbiom

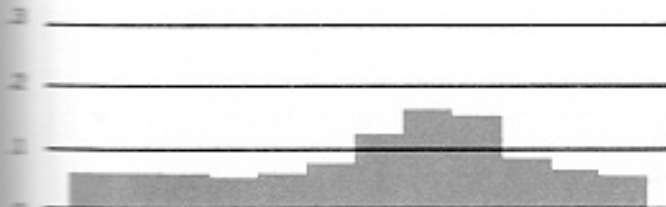


WATER YEAR

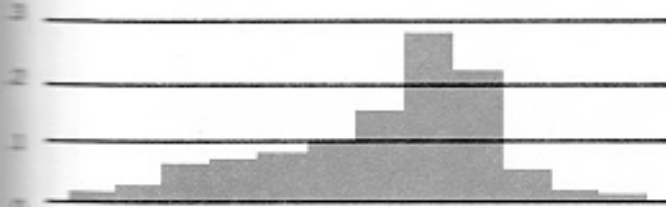
oct nov dec jan feb mar apr may jun jul aug sep



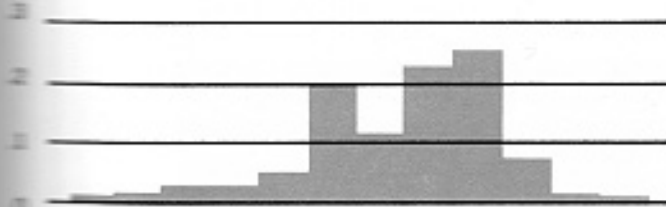
station no. 9-4150 VIRGIN RIVER at Littlefield, Arizona



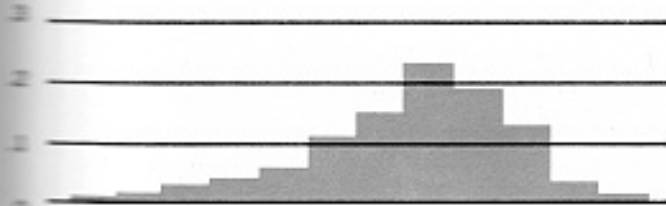
station no. 10-2437 CLEVE CREEK near Ely, Nevada



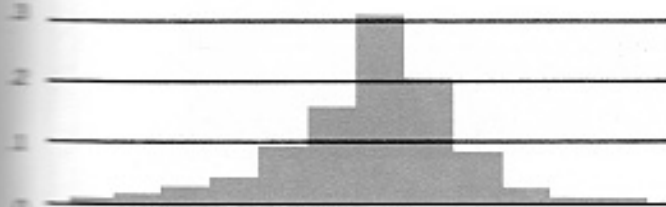
station no. 10-3120 CARSON RIVER near Fort Churchill, Nevada



station no. 10-3225 HUMBOLDT RIVER at Palisade, Nevada



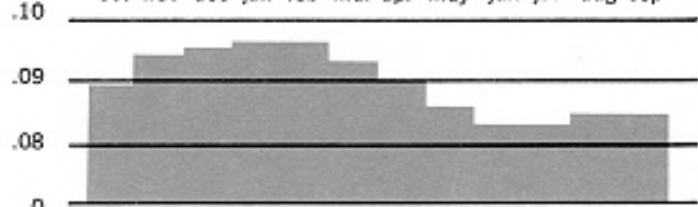
station no. 10-3330 HUMBOLDT RIVER near Imlay, Nevada



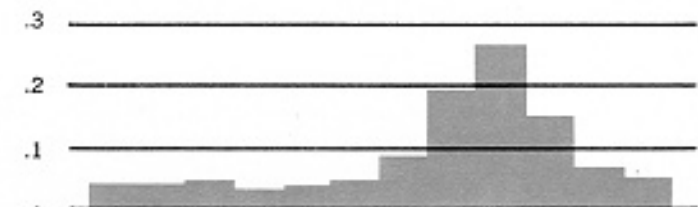
station no. 10-3525 McDERMITT CREEK near McDermitt, Nevada

WATER YEAR

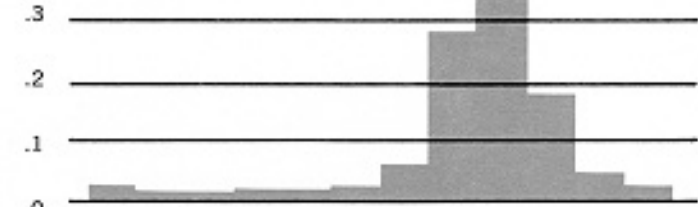
oct nov dec jan feb mar apr may jun jul aug sep



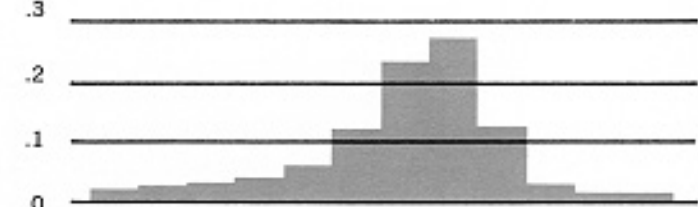
station no. 9-4160 MUDDY RIVER near Moapa, Nevada



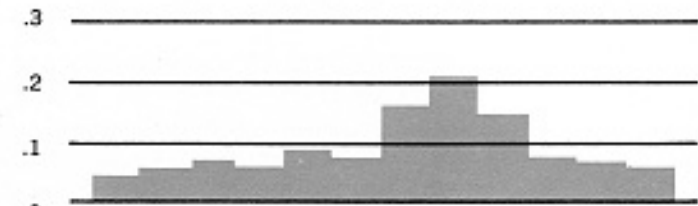
station no. 10-3000 WEST WALKER RIVER near Hudson, Nevada



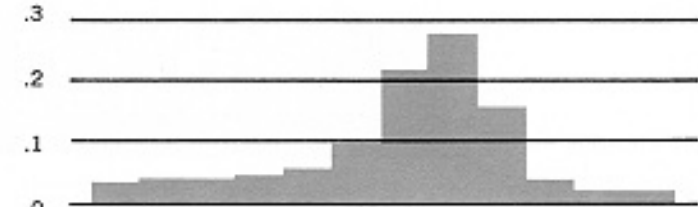
station no. 10-3165 LAMOILLE CREEK near Lamoille, Nevada



station no. 10-3295 MARTIN CREEK near Paradise Valley, Nevada



station no. 10-3450 TRUCKEE RIVER at Farad, California

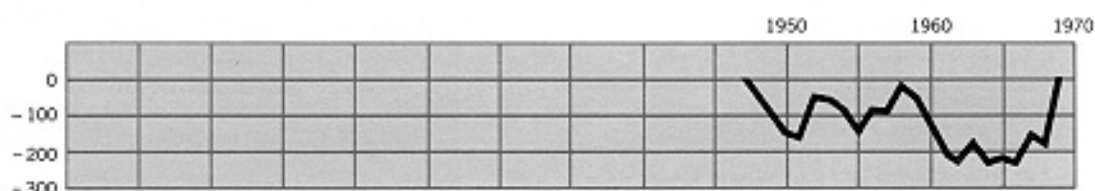


station no. 13-1050 SALMON FALLS CREEK near San Jacinto, Nevada

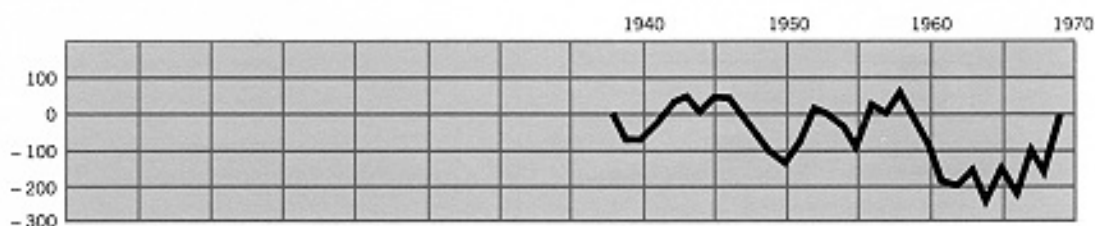
Figure 2 GRAPHS SHOWING CUMULATIVE DEPARTURE FROM AVERAGE ANNUAL STREAMFLOW



station no. 9-4150 VIRGIN RIVER at Littlefield, Arizona



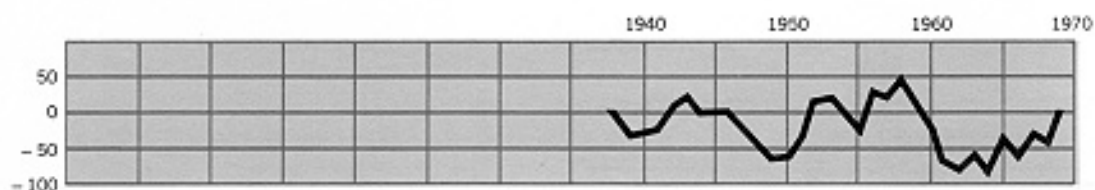
station no. 10-2935 EAST WALKER RIVER near Mason, Nevada



station no. 10-2960 WEST WALKER RIVER near Coleville, California



station no. 10-3090 EAST FORK CARSON RIVER near Gardnerville, Nevada

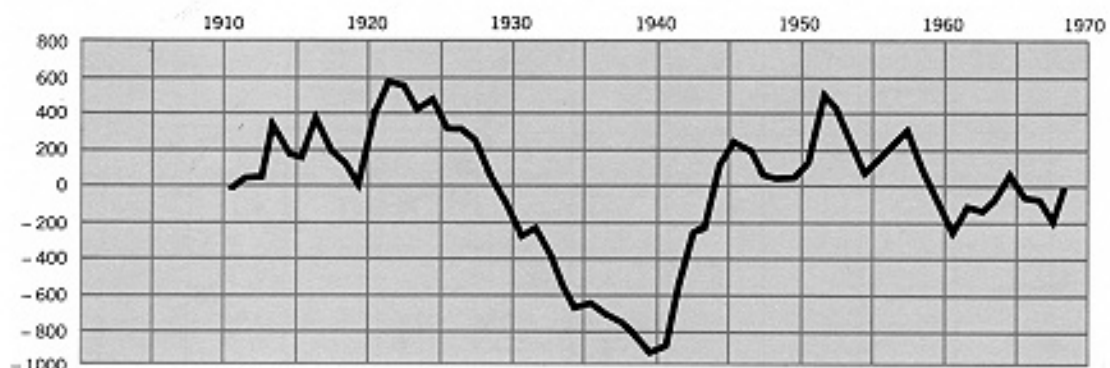


station no. 10-3100 WEST FORK CARSON RIVER at Woodfords, California

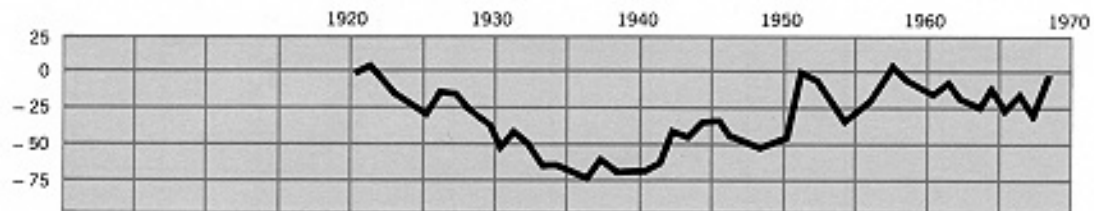
THOUSAND ACRE FEET



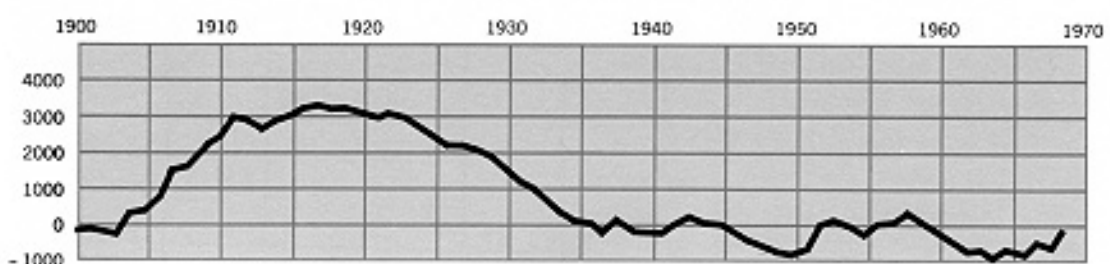
station no. 10-3120 CARSON RIVER near Fort Churchill, Nevada



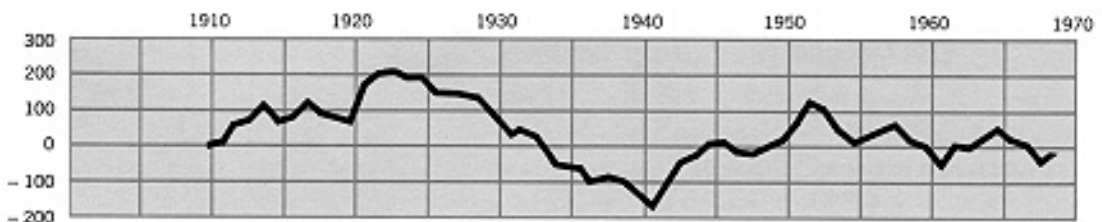
station no. 10-3225 HUMBOLDT RIVER at Palisade, Nevada



station no. 10-3295 MARTIN CREEK near Paradise Valley, Nevada



station no. 10-3460 TRUCKEE RIVER at Farad, California



station no. 13-1050 SALMON FALLS CREEK near San Jacinto, Nevada